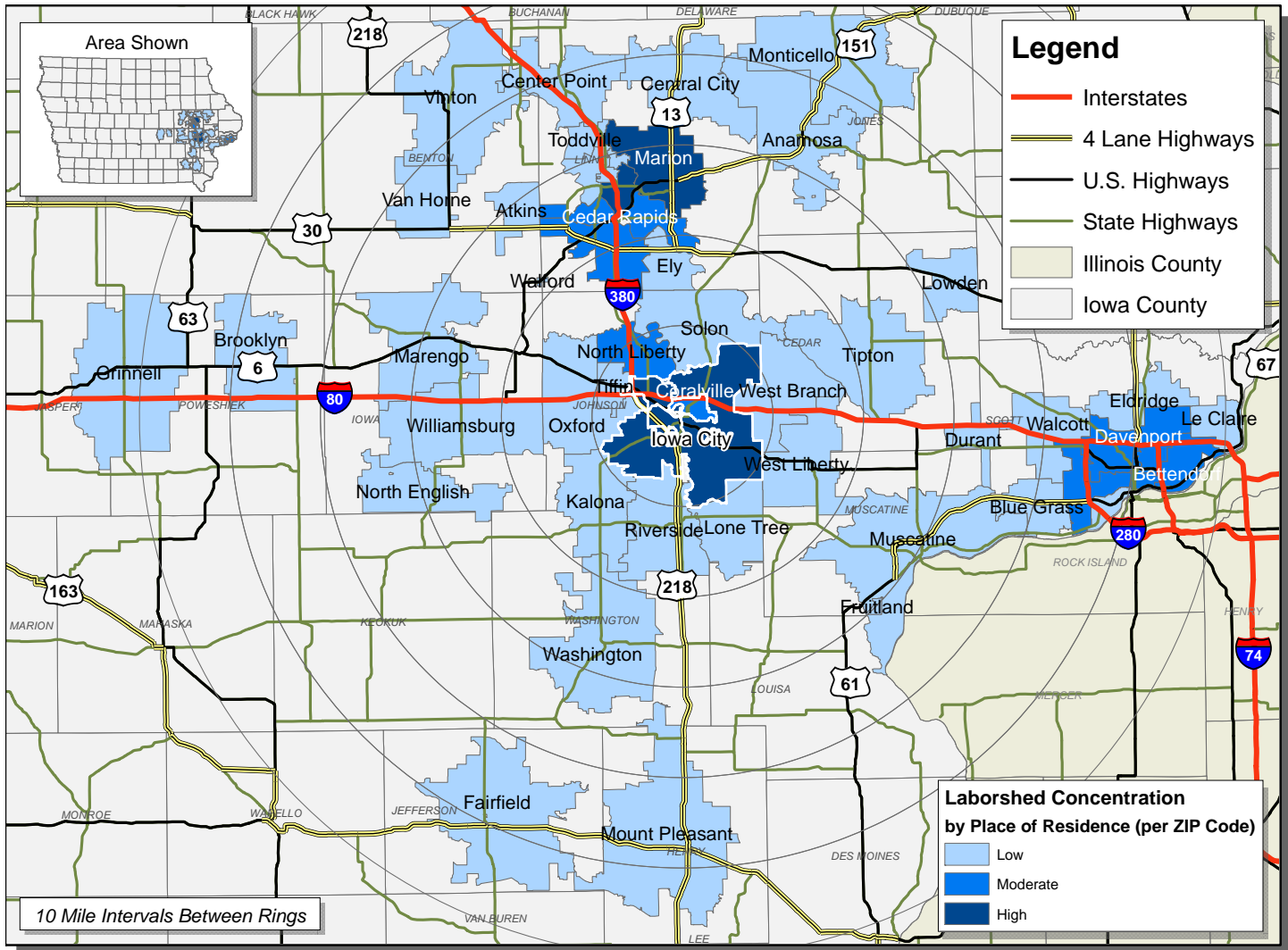


LABOR CHARACTERISTICS BUSINESS OPERATIONS



IOWA CITY, IOWA LABORSHED AREA

**CONCENTRATION OF RESPONDENTS WITHIN THE LABORSHED AREA
WITH TRANSFERABLE EXPERIENCE/SKILLS BY PLACE OF RESIDENCE**



Workers who have transferable experience/skills in the industry are currently commuting an average of 10 miles one way for work. Those who are likely to change/accept employment are willing to commute an average of 24 miles one way for the right employment opportunity.

FOR MORE INFORMATION REGARDING THE IOWA CITY AREA LABORSHED, CONTACT:



Iowa City Area Development Group
316 E Court Street
Iowa City, IA 52240
Phone: 319-354-3933
Fax: 641-792-5783
E-mail: DaLayne Williamson, dwilliamson@icadgroup.com
E-mail: Mark Nolte, molte@icadgroup.com
www.icadgroup.com

LABOR CHARACTERISTICS



BUSINESS OPERATIONS

ESTIMATED AVAILABLE LABOR PER OCCUPATIONAL CATEGORY:

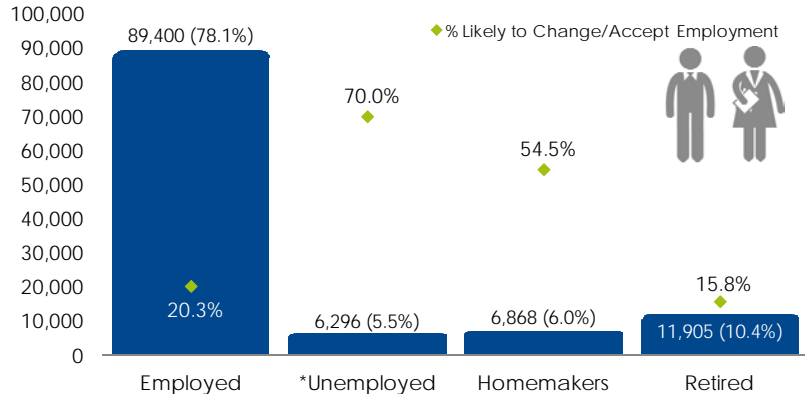
MANAGERS/ADMINISTRATORS

- Chief Executives - 5,004
- Administrative Service Managers - 6,253
- Advertising & Promotions Managers - 625
- Agricultural Managers - 4,379
- Compliance Managers - 626
- Construction Managers - 1,251
- Education Administrators - 5,630
- Engineering Managers - 627
- Financial Managers - 1,252
- General & Operations Managers - 6,255
- Human Resources Managers - 3,128
- Industrial Production Managers - 2,502
- Managers, All Other - 5,630
- Marketing Managers - 628
- Medical & Health Services Managers - 1,250
- Public Relations Managers - 625
- Sales Managers - 1,877
- Social & Community Service Managers - 624
- Transportation, Storage, & Distribution Managers - 629
- Purchasing Managers - 623

BUSINESS OPERATIONS:

- Supervisors - 630
- Accountants & Auditors - 1,249
- Bill & Account Collectors - 1,253
- Business Operations - 7,506
- Clerks - 18,140
- Cost Estimators - 1,248
- Customer Service Representatives - 4,379
- Dispatchers - 622
- Employment Specialists - 1,254
- Financial Analysts - 3,128
- Financial Examiners - 615
- Fundraisers - 631
- Human Resources - 621
- Interviewers - 1,255
- Loan Officers - 1,247
- Logisticians - 632
- Management Analysts - 620
- Market Research Analysts & Marketing Specialists - 618
- Planners - 619
- Office Workers - 3,128
- Secretaries - 9,383
- Tellers - 633
- Training Specialists - 635
- Typists - 1,246
- Weighers, Measurers, & Checkers - 3,759

ESTIMATED TOTAL BY EMPLOYMENT STATUS (PERCENTAGE):



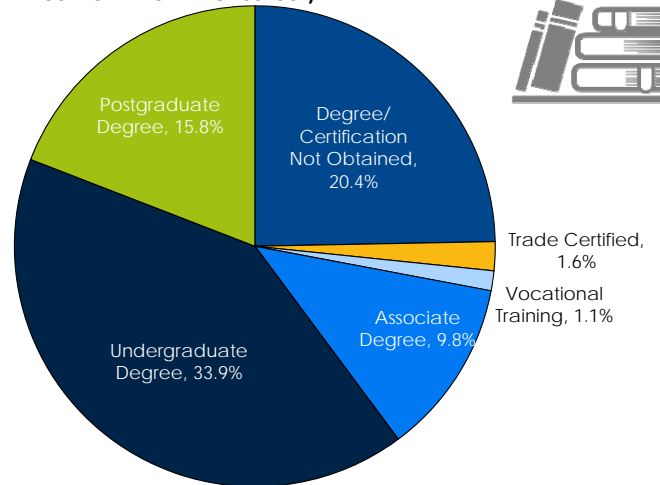
*Employment status is self-identified by the survey respondent. The unemployment percentage does not reflect the unemployment rate published by the U.S. Bureau of Labor Statistics, which applies a stricter definition.

EMPLOYMENT STATS:

- 57.8% paid an annual salary
- 76.9% are/were employed full-time
- 11.5% are/were employed part-time
- 10.4% are/were self-employed
- 10.5% hold two or more jobs
- Currently working an average of 43 hours/week

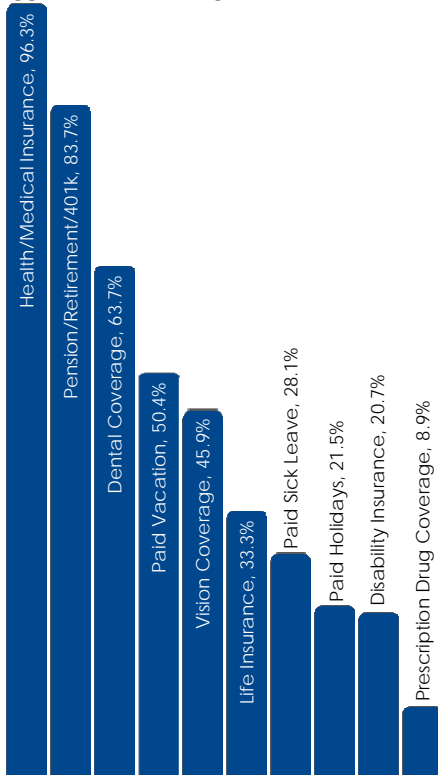
EDUCATIONAL LEVEL:

(82.6% HAVE AN EDUCATION BEYOND HIGH SCHOOL)

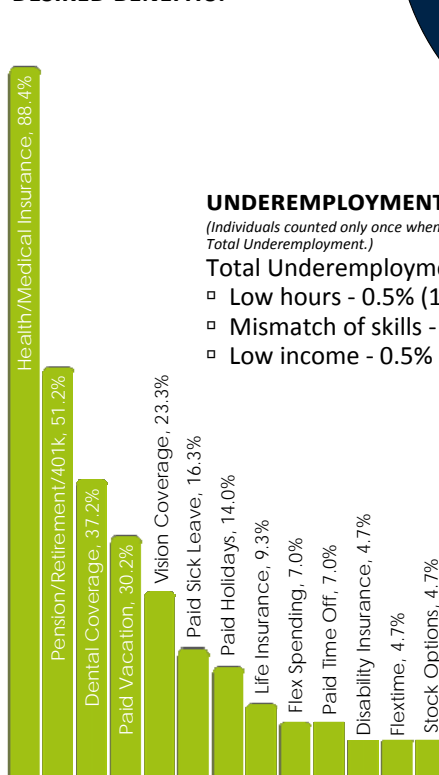


AN ESTIMATED TOTAL OF **114,469** PEOPLE IN THE LABORSHED AREA

CURRENT BENEFITS:



DESIRED BENEFITS:



UNDEREMPLOYMENT (ESTIMATED):

(Individuals counted only once when estimating Total Underemployment.)

Total Underemployment - 3.3% (1,147)

- Low hours - 0.5% (174)
- Mismatch of skills - 2.2% (765)
- Low income - 0.5% (174)

TOP JOB SEARCH RESOURCES:

(For those seeking employment opportunities, by use.)

- Internet - 74.6%
 - www.monster.com
 - www.indeed.com
- Networking through friends, family or acquaintances - 27.8%
- Local/Regional Newspapers - 24.3%
 - *The Gazette* - Cedar Rapids
 - *Iowa City Press Citizen*
- IowaWORKS Centers - 13.0%

WORKPLACE FLEXIBILITY:

(by percent of interest)

- Job teams - 73.9%
- Cross-training - 71.7%
- Job sharing - 45.7%
- Varied shifts - 32.6%
- Temporary work - 37.8%
- Seasonal work - 35.6%



LABOR CHARACTERISTICS - WAGES



BUSINESS OPERATIONS

OCCUPATION	OCCUPATIONAL CODE	MEAN WAGE	ENTRY WAGE	EXPERIENCED WAGE	MEDIAN WAGE	MEAN ANNUAL SALARY
Accountants and Auditors	13-2011	\$ 29.18	\$ 19.66	\$ 33.94	\$ 26.93	\$ 60,701
Administrative Services Managers	11-3011	\$ 36.73	\$ 24.35	\$ 42.91	\$ 34.49	\$ 76,391
Advertising and Promotions Managers	11-2011	\$ 36.68	\$ 19.72	\$ 45.15	\$ 29.08	\$ 76,285
Architectural and Engineering Managers	11-9041	\$ 56.25	\$ 43.74	\$ 62.51	\$ 55.90	\$ 117,010
Bill and Account Collectors	43-3011	\$ 17.27	\$ 12.54	\$ 19.64	\$ 16.42	\$ 35,931
Billing and Posting Clerks and Machine Operators	43-3021	\$ 17.58	\$ 13.07	\$ 19.84	\$ 16.70	\$ 36,576
Bookkeeping, Accounting, and Auditing Clerks	43-3031	\$ 15.81	\$ 10.25	\$ 18.59	\$ 15.40	\$ 32,876
Business Operations Specialists, All Other	13-1199	\$ 28.13	\$ 17.70	\$ 33.35	\$ 27.52	\$ 58,511
Chief Executives	11-1011	\$ 83.85	\$ 38.86	\$ 106.35	\$ 77.74	\$ 174,418
Compliance Officers, Except Agriculture, Construction, Health and Safety, and Transportation	13-1041	\$ 29.51	\$ 21.56	\$ 33.48	\$ 28.21	\$ 61,382
Construction Managers	11-9021	\$ 37.45	\$ 18.92	\$ 46.71	\$ 33.41	\$ 77,886
Cost Estimators	13-1051	\$ 28.92	\$ 18.43	\$ 34.17	\$ 27.88	\$ 60,161
Customer Service Representatives	43-4051	\$ 14.04	\$ 9.22	\$ 16.45	\$ 13.47	\$ 29,203
Data Entry Keyers	43-9021	\$ 14.04	\$ 10.48	\$ 15.82	\$ 13.85	\$ 29,198
Dispatchers, Except Police, Fire, and Ambulance	43-5032	\$ 17.11	\$ 10.61	\$ 20.36	\$ 16.76	\$ 35,592
Education Administrators, All Other	11-9039	\$ 33.48	\$ 20.72	\$ 39.85	\$ 34.53	\$ 69,630
Education Administrators, Elementary and Secondary School	11-9032	\$ 91,742.00	\$ 67,207.00	\$ 104,010.00	\$ 93,277.00	\$ 91,742
Education Administrators, Postsecondary	11-9033	\$ 47.74	\$ 25.30	\$ 58.95	\$ 40.17	\$ 99,289
Education Administrators, Preschool and Childcare Center/Program	11-9031	\$ 16.78	\$ 8.44	\$ 20.94	\$ 14.26	\$ 34,893
Eligibility Interviewers, Government Programs	43-4061	\$ 23.47	\$ 16.98	\$ 26.71	\$ 25.80	\$ 48,811
Executive Secretaries and Executive Administrative Assistants	43-6011	\$ 21.32	\$ 15.20	\$ 24.38	\$ 21.07	\$ 44,351
Farmers, Ranchers, and Other Agricultural Managers	11-9013	\$ 36.18	\$ 22.04	\$ 43.24	\$ 37.09	\$ 75,245
Financial Analysts	13-2051	\$ 34.91	\$ 23.77	\$ 40.49	\$ 34.03	\$ 72,621
Financial Examiners	13-2061	\$ 30.69	\$ 18.38	\$ 36.84	\$ 26.51	\$ 63,826
Financial Managers	11-3031	\$ 53.12	\$ 31.25	\$ 64.06	\$ 48.57	\$ 110,487
First-Line Supervisors of Office and Administrative Support Workers	43-1011	\$ 22.33	\$ 14.67	\$ 26.16	\$ 20.87	\$ 46,445
Fundraisers	13-1131	\$ 27.15	\$ 15.64	\$ 32.91	\$ 23.60	\$ 56,480
General and Operations Managers	11-1021	\$ 44.50	\$ 19.39	\$ 57.06	\$ 37.14	\$ 92,566
Hotel, Motel, and Resort Desk Clerks	43-4081	\$ 9.54	\$ 8.18	\$ 10.22	\$ 9.49	\$ 19,848
Human Resources Assistants, Except Payroll and Timekeeping	43-4161	\$ 17.98	\$ 12.35	\$ 20.79	\$ 17.74	\$ 37,390
Human Resources Managers	11-3121	\$ 45.07	\$ 27.96	\$ 53.62	\$ 41.74	\$ 93,738
Human Resources Specialists	13-1071	\$ 24.24	\$ 16.36	\$ 28.18	\$ 23.83	\$ 50,423
Industrial Production Managers	11-3051	\$ 41.21	\$ 26.54	\$ 48.55	\$ 39.03	\$ 85,727
Insurance Claims and Policy Processing Clerks	43-9041	\$ 16.52	\$ 12.95	\$ 18.31	\$ 15.02	\$ 34,364
Interviewers, Except Eligibility and Loan	43-4111	\$ 13.27	\$ 10.08	\$ 14.86	\$ 12.99	\$ 27,599
Legislators	11-1031	\$ 31,790.00	\$ 17,152.00	\$ 39,109.00	\$ 21,701.00	\$ 31,790
Loan Officers	13-2072	\$ 34.06	\$ 19.54	\$ 41.32	\$ 32.40	\$ 70,839
Logisticians	13-1081	\$ 31.97	\$ 23.57	\$ 36.18	\$ 30.12	\$ 66,505
Management Analysts	13-1111	\$ 39.12	\$ 22.55	\$ 47.41	\$ 33.27	\$ 81,373
Managers, All Other	11-9199	\$ 39.56	\$ 24.01	\$ 47.34	\$ 36.17	\$ 82,292
Market Research Analysts and Marketing Specialists	13-1161	\$ 24.37	\$ 15.30	\$ 28.90	\$ 22.69	\$ 50,686
Marketing Managers	11-2021	\$ 51.88	\$ 31.52	\$ 62.06	\$ 49.11	\$ 107,907
Medical and Health Services Managers	11-9111	\$ 39.87	\$ 24.20	\$ 47.71	\$ 37.05	\$ 82,933
Meeting, Convention, and Event Planners	13-1121	\$ 20.63	\$ 13.25	\$ 24.32	\$ 18.97	\$ 42,919
New Accounts Clerks	43-4141	\$ 16.52	\$ 14.23	\$ 17.67	\$ 16.53	\$ 34,368
Office and Administrative Support Workers, All Other	43-9199	\$ 16.85	\$ 10.44	\$ 20.06	\$ 16.33	\$ 35,054
Office Clerks, General	43-9061	\$ 15.71	\$ 10.37	\$ 18.38	\$ 15.23	\$ 32,674
Order Clerks	43-4151	\$ 17.61	\$ 9.90	\$ 21.47	\$ 18.34	\$ 36,635
Public Relations and Fundraising Managers	11-2031	\$ 40.58	\$ 25.77	\$ 47.98	\$ 37.87	\$ 84,399
Purchasing Managers	11-3061	\$ 47.47	\$ 31.10	\$ 55.65	\$ 46.03	\$ 98,729
Receptionists and Information Clerks	43-4171	\$ 12.72	\$ 9.53	\$ 14.32	\$ 12.19	\$ 26,463
Sales Managers	11-2022	\$ 48.40	\$ 28.60	\$ 58.30	\$ 45.10	\$ 100,669
Secretaries and Administrative Assistants, Except Legal, Medical, and Executive	43-6014	\$ 15.48	\$ 10.62	\$ 17.92	\$ 14.98	\$ 32,207
Shipping, Receiving, and Traffic Clerks	43-5071	\$ 14.80	\$ 10.51	\$ 16.94	\$ 14.26	\$ 30,777
Social and Community Service Managers	11-9151	\$ 26.52	\$ 18.10	\$ 30.74	\$ 23.76	\$ 55,171
Stock Clerks and Order Fillers	43-5081	\$ 11.95	\$ 8.24	\$ 13.80	\$ 10.92	\$ 24,848
Tellers	43-3071	\$ 12.31	\$ 10.34	\$ 13.30	\$ 12.06	\$ 25,614
Training and Development Specialists	13-1151	\$ 27.23	\$ 16.93	\$ 32.38	\$ 26.35	\$ 56,640
Transportation, Storage, and Distribution Managers	11-3071	\$ 36.49	\$ 22.17	\$ 43.65	\$ 34.70	\$ 75,895
Word Processors and Typists	43-9022	\$ 17.16	\$ 13.19	\$ 19.14	\$ 17.87	\$ 35,688

The 2014 Iowa Wage data for the Iowa City Laborshed area was produced by the Labor Force & Occupational Analysis Bureau to provide communities local information on wages by occupation. The source of the wage and employment data is based on the May 2013 OES estimates. Additional occupational wage and employment data can be found at <http://iwin.iwd.state.ia.us/iowa/OlmisZine>.

Balance of data compiled by Iowa Workforce Development using Laborshed data released in 2015.